



## MAYFLASH Arcade Stick F101 for Switch/ PC/PS3/NEOGEO mini

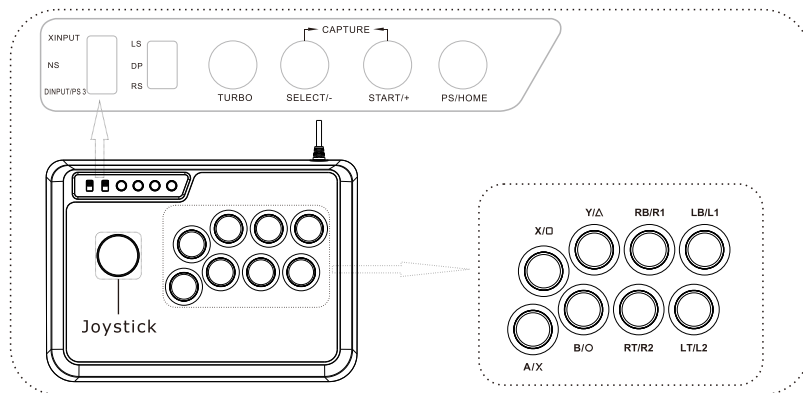
### 3. TURBO

-The 8 function buttons (X, ○, □, △, R1, R2, L1, L2) can be set for TURBO.

-To set Turbo for individual buttons, press and hold the button that you wish to set TURBO for, and the button "TURBO" on the fighting stick. You'll find that the TURBO LED will flash, and the setting is finished. -To remove the setting for that specific button, press and hold the button you previously set Turbo for and the TURBO button. To clear all Turbo settings for all buttons, quickly press the TURBO button twice within half of a second.

-TURBO Speed: To speed up, press and hold the button TURBO and push the stick up; to reduce the speed, press and hold the button TURBO and push the stick down. There are 3 speed levels, 5 times/second, 10 times/second, and 20 times/second. The default speed is 10 times/second.

### Additional Function



### 4. SELECT

- Switch:- button
- PS : SELECT button
- XINPUT: ⑦ button
- DINPUT: ⑨ button
- ANDROID: ① button

### 5. START

- Switch:+ button
- PS3 : START button
- XINPUT: ⑧ button
- DINPUT: ⑩ button
- ANDROID: ② button

### 6. PS/HOME

- Switch:HOME button
- PS3: PS button
- XINPUT: HOME button
- DINPUT: ⑬ button
- ANDROID: ⑬ button

### 7. PS /HOME LED

PS /HOME LED will stay lit once you connect F101 to your Switch, PC, Android devices or PlayStation 3 successfully.

### How to Upgrade?

1. Download the firmware from <http://www.mayflash.com/Support/> and install it on your Windows system.
2. Double click on the updater and leave the updater window open on your screen.
3. Press and hold the HOME button on F101, and connect the USB from your Arcade Fight Stick into any spare port on your PC.
4. As soon as the driver window indicates under "Device" that the Stick has been recognized, you may release the HOME button.
5. Select "UPGRADE".
6. Do not disconnect the device until you are informed that the updated was completed successfully.

## Introduction

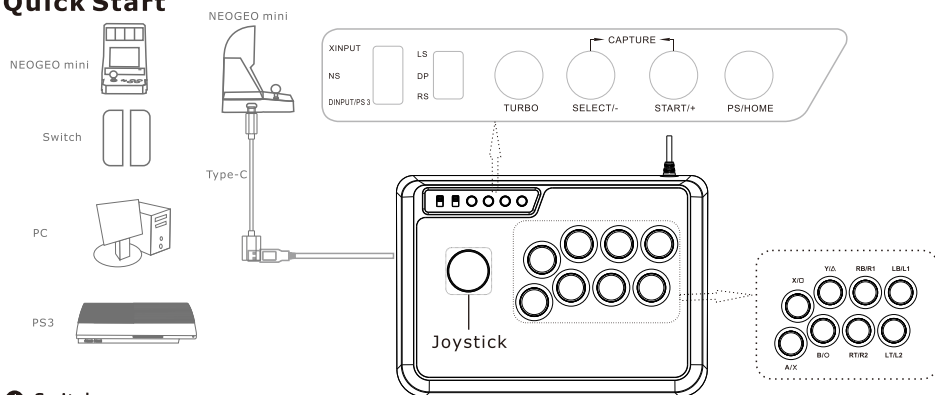
We want to say thank you for choosing the MAYFLASH Arcade F101 and congratulation you on your decision. We are sure that our product will provide you with a great deal of gaming pleasure for years to come. These instructions contain valuable information about operating and configuring the fighting stick. Please keep this manual in a safe place for future reference.

If you find any issues or have any difficulty operating the device, please reach out to us at [info@mayflash.com](mailto:info@mayflash.com) and we will be more than happy to help you out.

## Features:

- Compatible with Switch, PC, PlayStation 3 system and NEOGEO mini.
- Compatible with Sanwa Denshi buttons that is perfect for customization to make it your very own. (Sanwa Denshi buttons are not included in the packaging and you need to buy them separately).
- Supports the XINPUT and DINPUT when being used on PC.
- Supports the Turbo function with different speed settings you can toy with.
- The D-Pad and X/Y Analog Axis mode can be exchanged.
- The Fighting Stick has considerable heft and rubber feet, both of which work to hold the controller firmly in place on hard, flat surfaces.
- Compatible with Windows XP/Vista/Windows 7/ Windows 8/Windows 10/Windows 11.

## Quick Start



### 1 Switch

Switch to "NS" mode by using the switch located on the F101. Plug the F101 into your Switch system.

F101	A/X	B/O	X/□	Y/△	LB/L1	RB/R1	SELECT	START			STICK			LT/L2	RT/R2	HOME	SELECT+START
Joy-Con	B	A	Y	X	L	R	-	+	L3	R3	LS	RS	POV	ZL	ZR	HOME	Capture

### 2 NEOGEO mini

Push the switch located on the left top corner of F101 to the "XINPUT" mode. Push the switch "LS DP RS" located on the left top corner of F101 to the "DP" mode. Connect the F101 with your NEOGEO mini system by a Type C cable. F101 will be recognized by NEOGEO mini automatically.

F101	A/X	B/O	X/□	Y/△	LB/L1	RB/R1	SELECT/BACK/SHARE	START/OPTIONS/MENU	Joystick (DPAD)	LT/L2	RT/R2	HOME
NeoGeo mini	B	D	A	C			SELECT	START	Joystick			

### 3 PC

Switch to "XINPUT" or "DINPUT" mode by using the switch located on the F101, and then plug the F101 into your computer.

F101	A/X	B/O	X/□	Y/△	LB/L1	RB/R1	LT/L2	RT/R2	SELECT	START	PS/HOME	STICK		
PC Xinput	1	2	3	4	5	6	Z Axis ↓	Z Axis ↑	7	8	HOME	X/Y Axis	POV	X/Y Rotate
PC Dinput	2	3	1	4	5	6	7	8	9	10	13	X/Y Axis	POV	Z Axis

### 4 PS3

Switch to "DINPUT/PS3" mode by using the switch located on the F101. Plug the F101 into your PS3 Game Console.

F101	A/X	B/O	X/□	Y/△	LB/L1	RB/R1	LT/L2	RT/R2	SELECT	START	PS/HOME	STICK		
PS3 Controller	ⓧ	Ⓞ	Ⓚ	Ⓢ	L1	R1	L2	R2	SELECT	START	PS	LS	+	RS

### 5 Android

Switch to "NS" mode by using the switch located on the F101, and then connect the F101 to your Android devices. (If an OTG cable needed, please purchase it separately).

F101	A/X	B/O	X/□	Y/△	LB/L1	RB/R1	LT/L2	RT/R2	SELECT	START	PS/HOME	STICK		
Android	1	2	4	5	7	8	9	10	11	12	13	X/Y Axis	POV	Z Axis

### 6 SEGA MEGA DRIVE & SEGA GENESIS mini

Switch to "DINPUT/PS3" mode by using the switch located on Arcade Stick F101, and then connect the Arcade Stick F101 to your SEGA MEGA DRIVE or SEGA GENESIS mini console.

F101	A/X	B/O	X/□	Y/△	LB/L1	RB/R1	SELECT	START	JOYSTICK (DPAD)	LT/L2	RT/R2	HOME
SEGA MEGA DRIVE	A	B	X	Y		Z	MODE	START	POV		C	
SEGA GENESIS	A	B						START	POV		C	

### 1. XINPUT, NS and DINPUT/PS3

- XINPUT: Xbox 360 controller protocol.
- NS: Switch to "NS" when being used on Switch or Android system.
- DINPUT/PS3: Used for PlayStation3 or Direct Input, standard HID protocol.

### 2. LS, DP and RS

If the switch is set to the "LS", the stick works as the "Left Joystick". If setting the switch to "DP", the stick works as "Directional Buttons". If the switch is set to the "RS", the stick works as the "Right Joystick".